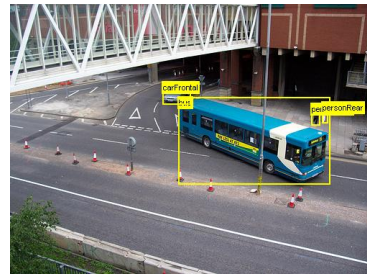
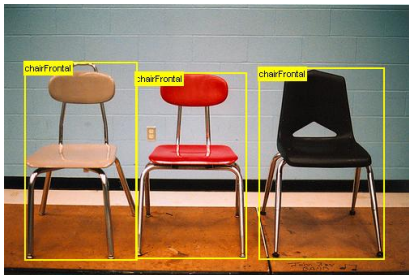
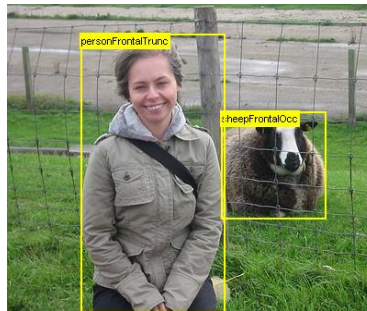


INTEL[®] AI LAB



PASCALVOC 2012



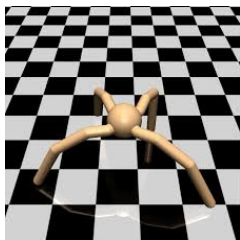
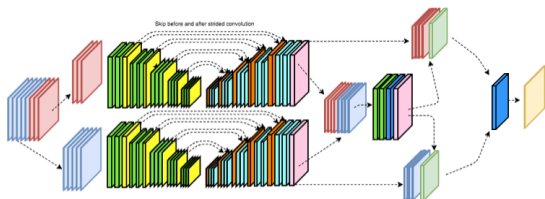
SpaceNet

INTEL AI LAB

INTEL AI LAB

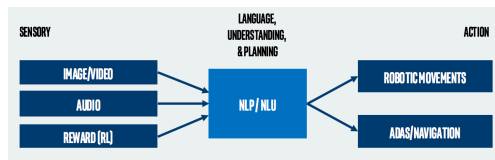
Research

Advancing state-of-the-art across multiple domains (NLP, CV, RL, Speech, Multi-task learning)



Multi-model Integrative

Integrating multiple sensory inputs (audio, vision, etc.) into an end-to-end RL system.

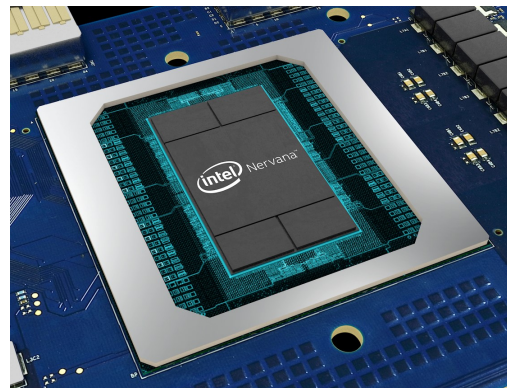


Novel Datasets

Collecting and contributing novel datasets. Focus on domains blocked by lack of data, challenges in today's algorithms.

Algorithms

Models designed for the Intel Nervana™ Neural Network Processor (coming in 2018)



INTEL AT NIPS

Koster et al, Flexpoint: An Adaptive Numerical Format for Efficient Training of Deep Neural Networks

Poster Session: Monday, December 4

Santara et al, RAIL: Risk-Adverse Imitation Learning

Poster session: Deep RL Symposium

Ahmen, Nsreen. Representation Learning in Large Attributed Graphs

WiML Workshop

Raanan et al, Unsupervised Deep Structure Learning by Recursive Independence Testing

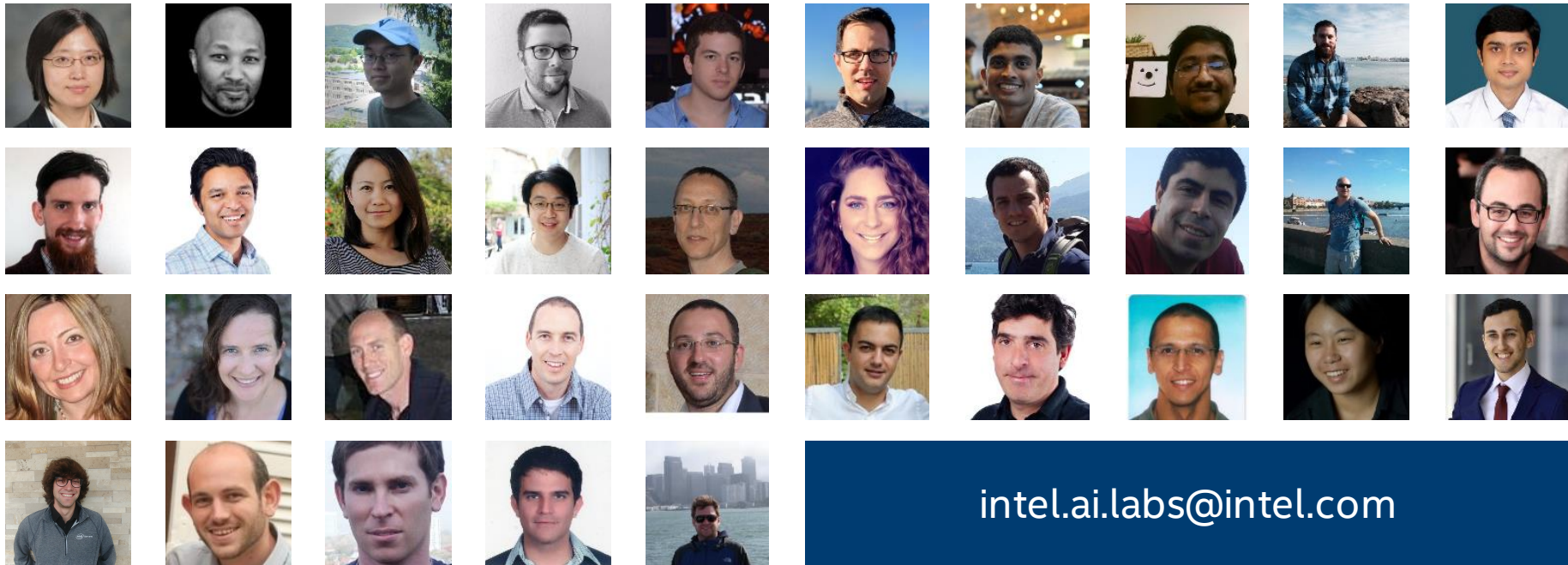
Bayesian DL Workshop: Saturday, December 9

Thomas, Anil. Research competition: Defense Against Adversarial Attack (3rd place)

Adversarial Attacks and Defenses Competition Track. Friday, December 8

INTEL® AI LAB: JOIN US

US & ISRAEL LOCATIONS



intel.ai.labs@intel.com

